

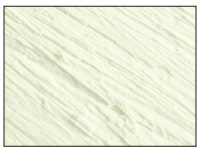
Williamsburg™

HANDMADE OIL COLORS



Color Chart

The proper pigment and exact grind are integral to Williamsburg Handmade Oil Colors. Each color is ground in premium, alkali-refined, pH-balanced linseed oil to enhance the beauty and luminosity specific of its pigment.



Flake White
6000104



Silver White
6000114



Titanium White
6000101



Titanium - Zinc White
6000121



Zinc White
6000141



Zinc Buff
6000161



Zinc Buff Yellowish
6000162



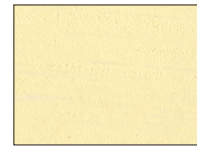
Unbleached Titanium
Pale
6000191



Unbleached Titanium
6000181



Brilliant Yellow Extra
Pale
6000202



Brilliant Yellow Pale
6000212



Nickel Yellow
6000224



Cadmium Lemon
6000246



Permanent Lemon
6000263



Cadmium Yellow Light
6000286



Permanent Yellow Light
6000303



Cadmium Yellow
Medium
6000366



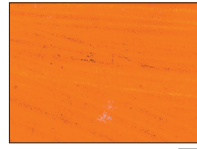
Permanent Yellow
Medium
6000383



Cadmium Yellow Deep
6000406



Permanent Yellow Deep
6000423



Cadmium Yellow Extra
Deep
6000416



Naples Yellow
6000442



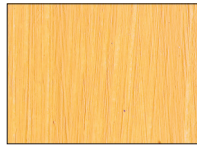
Naples Yellow Italian
600462



Naples Yellow Reddish
6000422



Canton Rose
6000744



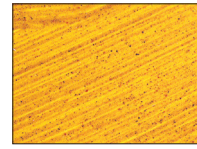
Jaune Brilliant
6000463



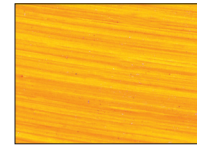
Montserrat Orange
6000584



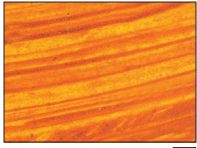
Cobalt Yellow
6000508



Alizarin Yellow
6000514



Indian Yellow
6000524



Alizarin Orange
6000534



Cadmium Orange
6000546



Permanent Orange
6000543



Permanent Red-Orange
6000563



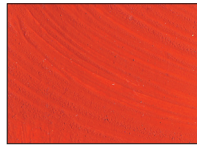
Cadmium Red Light
6000587



Cadmium Red
Vermilion
6000597



Cadmium Red Medium
6000607



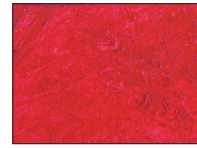
Fanchon Red
6000624



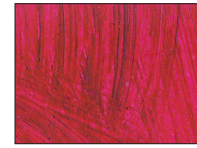
Cadmium Red Deep
6000647



Cadmium Red Purple
6000657



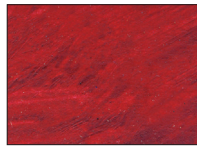
Quinacridone Red
6000665



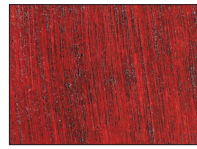
Quinacridone Magenta
6000775



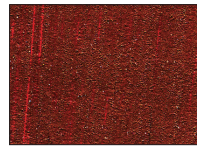
Carl's Crimson
6000685



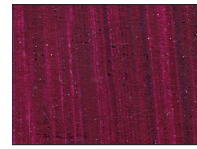
Permanent Crimson
6000687



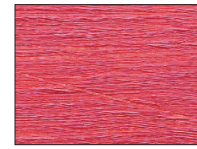
Alizarin Crimson
6000684



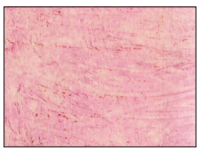
Perylene Crimson
6000686



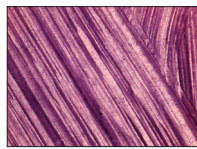
Quinacridone Violet
6000785



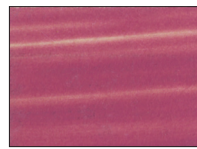
Persian Rose
600714



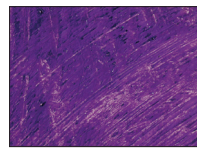
Dianthus Pink
6000724



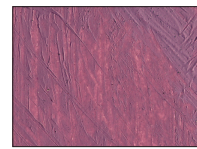
Ultramarine Pink
6000774



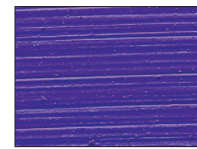
Cobalt Violet Light
6000728



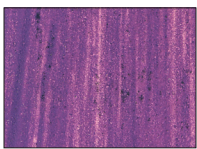
Cobalt Violet Deep
6000748



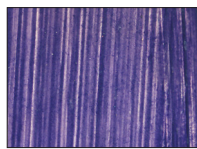
Provence Violet
Reddish
6000734



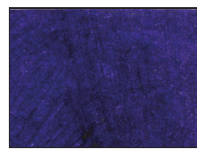
Provence Violet Bluish
6000754



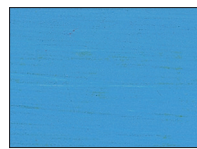
Manganese Violet
6000704



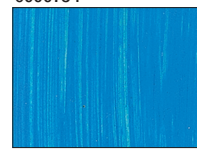
Ultramarine Violet
6000764



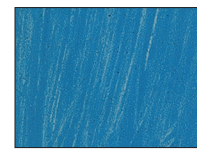
Egyptian Violet
6000805



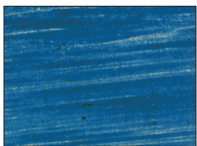
King's Blue
6000813



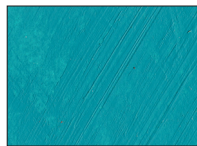
Sevres Blue
6000823



Cerulean Blue
(Genuine)
6000848



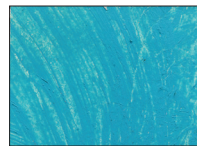
Cerulean Blue French
6000857



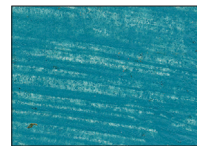
Turquoise
6000863



Cobalt Teal
6000787



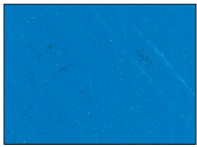
Cobalt Teal Deep
6000817



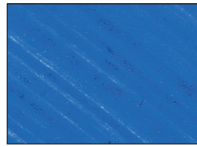
Cobalt Turquoise
Greenish
6000887



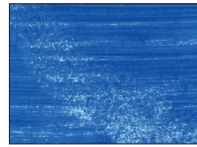
Cobalt Turquoise
Bluish
6000907



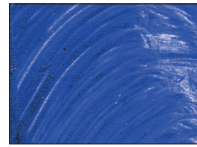
Cobalt Blue
6000927



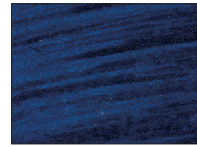
Cobalt Blue Deep
6000937



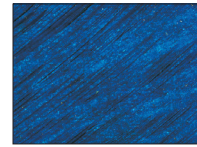
Ultramarine Blue
6000942



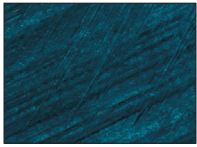
Ultramarine Blue
French
6000962



Prussian Blue
6000982



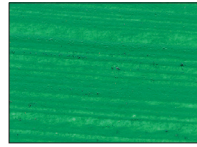
Phthalo Blue
6001004



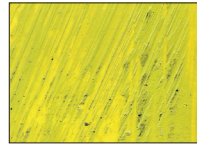
Phthalo Turquoise
6001024



Indigo
6001043



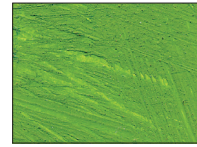
Veronese Green
6001103



Cinnabar Green Light
6001153



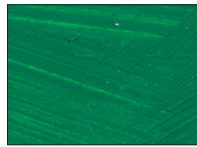
Cadmium Green Light
6001146



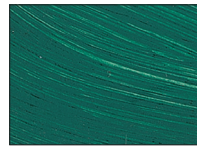
Cadmium Green
6001186



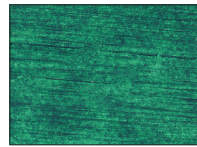
Permanent Green Light
6001163



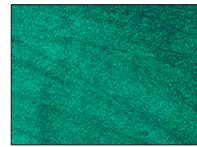
Permanent Green
6001263



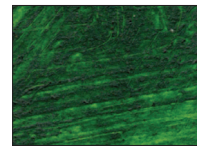
Viridian
6001245



Phthalo Green-
Yellowish
6001264



Phthalo Green
6001284



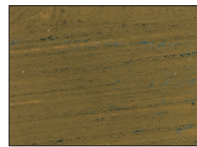
Sap Green
6001304



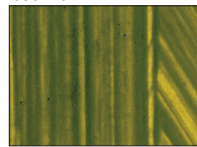
Courbet Green
6001323



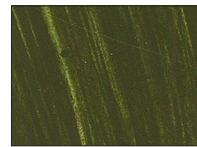
Chromium Oxide
6001223



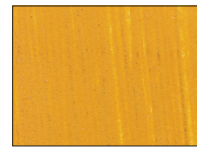
Bohemian Green Earth
6001022



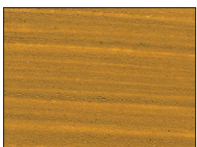
Olive Green
6000323



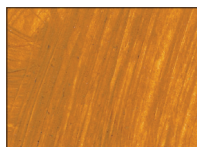
Earth Green
6001122



Yellow Ochre
(Domestic)
6001401



Raw Sienna
6001501



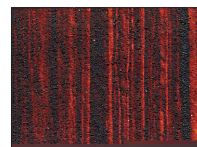
Cyprus Orange
6001512



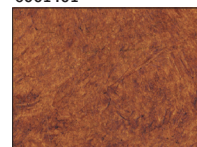
Stil De Grain
6001464



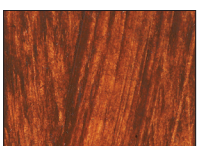
Brown Pink
6001484



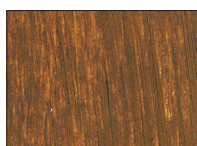
Quinacridone Gold
Brown
6000875



Italian Pink
6001474



Burnt Sienna
6001521



Yellow Ochre Burnt
6001541



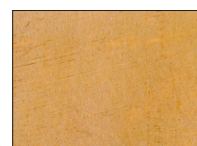
Brown Ochre
6001561



Red Ochre
6001581



Spanish Earth
6001601



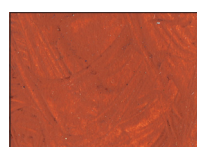
Mars Yellow Light
6001342



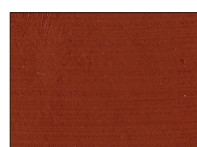
Mars Yellow Deep
6001362



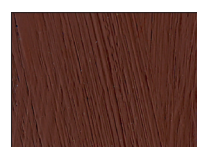
Mars Orange
6001382



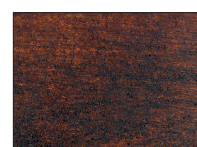
Mars Red Light
6001402



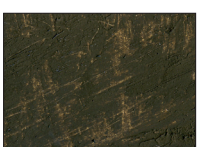
Mars Red
6001422



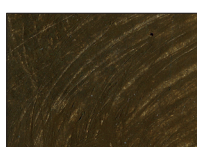
Mars Violet
6001442



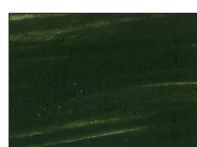
Dutch Brown
(Transparent)
6001494



Raw Umber
6001621



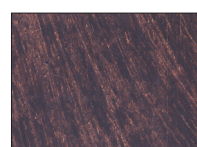
Brown Umber
6001631



Turkey Umber
6001641



Burnt Umber
6001661



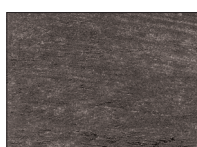
Red Umber
6001671



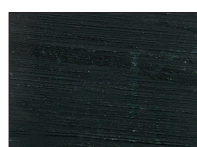
Van Dyke Brown
6001681



German Earth
6001792



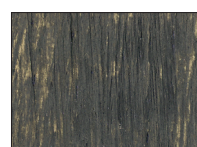
Graphite Grey
6001702



Payne's Grey (Violet)
6001063



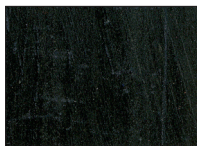
Payne's Grey
6001703



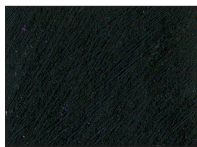
Davys's Grey Deep
6001701



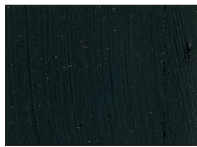
Slate Black
6001691



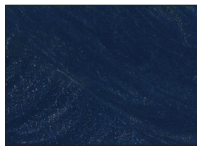
Ivory Black
6001721



Mars Black
6001742



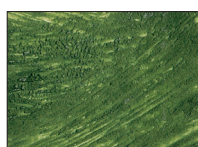
Lamp Black
6001761



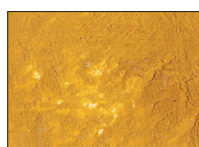
Cold Black
6001732



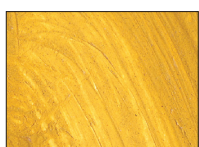
Native Italian Earth Colors These particular pigments are rare and come from the same mining regions in Italy made famous by the great Sieneese and Florentine masters. They are prized for their authenticity and used by many conservators and restorers.



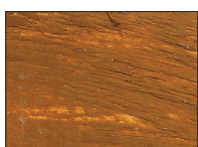
Italian Terra Verte
6000013



Italian Lemon Ochre
6000014



Italian Yellow Ochre
6000015



Italian Orange Ochre
6000016



Italian Green Ochre
6000017



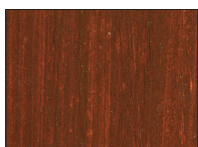
Italian Pompeii Red
6000018



Italian Rosso Veneto
6000019



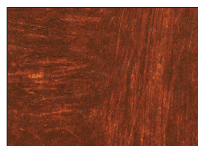
Italian Pozzuoli Earth
6000020



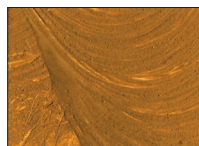
Italian Terra Rosa
6000021



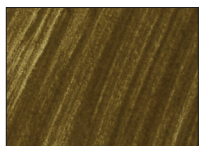
Italian Black Roman Earth
6000022



Italian Burnt Sienna
6000023

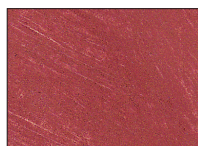


Italian Raw Sienna
6000024

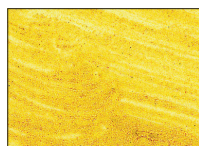


Italian Raw Umber
6000025

Iridescent & Interference Colors These paints are mica-based and extremely lightfast. The Iridescent colors will not tarnish and have a semi-translucent quality. The Interference colors are more transparent and wonderful for glazing, where they show their strongest effect over darker areas.



Iridescent Copper
6001883



Iridescent Pale Gold
6001823



Iridescent Pearl White
6001863



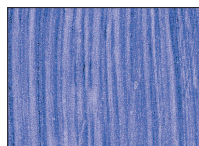
Iridescent Bronze
6001853



Iridescent Silver
6001833



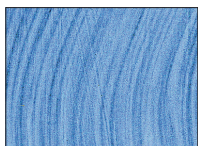
Iridescent Pewter
6001843



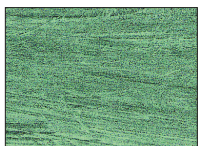
Interference Violet
6001813



Interference Red
6001873



Interference Blue
6001803



Interference Green
6001893

LEGEND

- Opaque
- Semi-Opaque
- Semi-Transparent
- Transparent

- ASTM Lightfastness Rating
- I Excellent
 - II Very Good
 - III Moderate

Manufacturer's Lightfastness Rating
 N/A* These colors use pigments rated permanent by the manufacturer but not yet tested by ASTM. This is used where Lightfastness Ratings have not been obtained according to ASTM test protocol.

Pigment Composition

Color	Series	Pigment Name	CI#
Alizarin Crimson	4	1, 2 dihydroxy anthraquinone	PR 83
Alizarin Orange	4	Anthraquinone, Diarylide Yellow	PR 177, PY 83
Alizarin Yellow	4	Synthetic Hydrated Iron Oxide, Diarylide Yellow	PY 42, PY 83
Bohemian Green Earth	2	Zinc Ferrite Brown, Synthetic Iron Oxide, Copper Chromite Black Spinel, Titanium Dioxide Rutile	PY 119, PY 42, PBk 28, PW 6
Brilliant Yellow Extra Pale	2	Zinc Oxide, Titanium Dioxide Rutile, Arylide Yellow 10G, Calcined Natural Iron Oxide	PW 4, PW 6, PY 3, PBr 7
Brilliant Yellow Pale	2	Titanium Dioxide Rutile, Zinc Oxide, Arylide Yellow 10G, Arylide Yellow 5GX	PW 6, PW 4, PY 3, PY 74
Brown Ochre	1	Synthetic Hydrated Iron Oxide, Synthetic Iron Oxide	PY 42, PR 101
Brown Pink	4	Synthetic Iron Oxide	PR 101
Brown Umber	1	Calcined Natural Iron Oxide containing Manganese	PBr 7
Burnt Sienna	1	Calcined Natural Iron Oxide	PR 102
Burnt Umber	1	Calcined Natural Iron Oxide containing Manganese	PBr 7
Cadmium Green	6	C.P. Cadmium Zinc Sulfide, Anhydrous Chrom. Sesquioxide	PY 35, PG 18
Cadmium Green Light	6	C.P. Cadmium Zinc Sulfide, Anhydrous Chrom. Sesquioxide	PY 35, PG 18
Cadmium Lemon	6	C.P. Cadmium Zinc Sulfide	PY 35
Cadmium Orange	6	C.P. Cadmium Sulfo-Selenide	PO20
Cadmium Red Deep	7	C.P. Cadmium Sulfo-Selenide	PR 108
Cadmium Red Light	7	C.P. Cadmium Sulfo-Selenide	PR 108
Cadmium Red Medium	7	C.P. Cadmium Sulfo-Selenide	PR 108
Cadmium Red Purple	7	C.P. Cadmium Sulfo-Selenide	PR 108
Cadmium Red Vermilion	7	C.P. Cadmium Sulfo-Selenide	PR 108
Cadmium Yellow Deep	6	C.P. Cadmium Zinc Sulfide	PY 35
Cadmium Yellow Extra Deep	6	C.P. Cadmium Zinc Sulfide	PY 35
Cadmium Yellow Light	6	C.P. Cadmium Zinc Sulfide	PY 35
Cadmium Yellow Medium	6	C.P. Cadmium Zinc Sulfide	PY 35
Canton Rose	4	Titanium Dioxide Rutile, Zinc White, Synthetic Hydrated Iron Oxide, Naphthol AS-D	PW 6, PW 4, PY 42, PR 112
Carl's Crimson	5	Naphthol AS	PR 187
Cerulean Blue (Genuine)	8	Cobalt Stannate	PB 35
Cerulean Blue French	7	Cobalt Chromate Blue-Green Spinel	PB 36
Chromium Oxide	3	Anhydrous Chromium Sesquioxide	PG 17
Cinnabar Green Light	3	Arylide Yellow 10G, Polysulfide of Sodium-Alumino-Silicate	PY 3, PB 29
Cobalt Blue	7	Oxides of Cobalt and Aluminum	PB 28
Cobalt Blue Deep	7	Oxides of Cobalt and Aluminum	PB 28
Cobalt Teal	7	Oxides of Nickel, Cobalt & Titanium	PG 50
Cobalt Teal Deep	7	Oxides of Cobalt and Aluminum	PB 28
Cobalt Turquoise Bluish	7	Oxides of Cobalt, Chromium & Aluminum	PB 36
Cobalt Turquoise Greenish	7	Oxides of Cobalt, Chromium & Aluminum	PB 36
Cobalt Violet Deep	8	Cobalt Phosphate	PV 14
Cobalt Violet Light	8	Cobalt Ammonium Phosphate	PV 49
Cobalt Yellow	8	Cobalt Potassium Nitrate	PY 40
Cold Black	2	Polysulfide of Sodium-Alumino-Silicate, Amorphous Carbon produced by charring animal bones	PB 29, PBk 9
Courbet Green	3	Calcined Yellow Ochre, Sodium Ammonium Ferroferricyanide, Arylide Yellow RN	PR 102, PB27, PY 65
Cyprus Orange	2	Synthetic Hydrated Iron Oxide, Dipyrrolopyrrol	PY 42, PO 73
Davy's Grey Deep	1	Powdered Slate	PBk 19
Dianthus Pink	4	Titanium Dioxide Rutile, Quinacridone	PW 6, PV19
Dutch Brown (Transparent)	4	Synthetic Iron Oxide	PR 101
Earth Green	2	Synthetic Hydrated Iron Oxide, Chlorinated Copper Phthalocyanine	PY 42, PG 7
Egyptian Violet	5	Carbazole Dioxazine	PV 23
Fanchon Red	4	Naphthol AS-D	PR 112
Flake White	4	Basic Lead Carbonate	PW 1
German Earth	2	Natural Black Iron Oxide	PBk 11
Graphite Grey	2	Graphite	PBk 10
Indian Yellow	4	Diarylide Yellow	PY 83
Indigo	3	Natural Iron Oxide, Sodium Ammonium Ferroferricyanide	PBr 7, PB 27
Interference Blue	3	Titanium Dioxide coated Mica Particles	NA
Interference Green	3	Titanium Dioxide coated Mica Particles	NA
Interference Red	3	Titanium Dioxide coated Mica Particles	NA
Interference Violet	3	Titanium Dioxide coated Mica Particles	NA
Iridescent Bronze	3	Iron Oxide coated Mica Particles	NA
Iridescent Copper	3	Iron Oxide coated Mica Particles	NA
Iridescent Pale Gold	3	Titanium Dioxide and Iron Oxide coated Mica Particles	NA
Iridescent Pearl White	3	Titanium Dioxide coated Mica Particles	NA
Iridescent Pewter	3	Titanium Dioxide coated Mica Particles	NA
Iridescent Silver	3	Titanium Dioxide coated Mica Particles	NA
Italian Black Roman Earth	3	Calcined Natural Iron Oxide containing Manganese, Nearly Pure Amorphous Carbon	PBr 7, PBk 6
Italian Burnt Sienna	3	Calcined Natural Iron Oxide	PBr 7
Italian Green Ochre	3	Calcined Natural Iron Oxide, Natural Hydrated Iron Oxide	PBr 7, PY 43
Italian Lemon Ochre	3	Natural Hydrated Iron Oxide	PY 43
Italian Orange Ochre	3	Calcined Natural Iron Oxide, Natural Hydrated Iron Oxide	PBr 7, PY 43
Italian Pink	4	Synthetic Hydrated Iron Oxide, Synthetic Iron Oxide	PY 42, PR 101
Italian Pompeii Red	3	Calcined Natural Iron Oxide	PR 102
Italian Pozzuoli Earth	3	Calcined Natural Iron Oxide	PR 102
Italian Raw Sienna	3	Natural Hydrated Iron Oxide	PY 43
Italian Raw Umber	3	Natural Iron Oxide containing Manganese	PBr 7
Italian Rosso Veneto	3	Calcined Natural Iron Oxide	PR 102
Italian Terra Rosa	3	Calcined Natural Iron Oxide	PR 102
Italian Terra Verte	3	Natural Ferrous Silicate containing Magnesium and Aluminum Potassium Silicates	PG 23

Pigment Composition (cont.)

Color	Series	Pigment Name	CI#
Italian Yellow Ochre	3	Natural Hydrated Iron Oxide	PY 43
Ivory Black	1	Amorphous Carbon produced by charring animal bones	PBk 9
Jaune Brilliant	3	Titanium Dioxide Rutile, Zinc Oxide, Synthetic Hydrated Iron Oxide, Arylide Yellow 5GX, Dipyrrolopyrrol	PW 6, PW 4, PY 42, PY 74, PO 73
King's Blue	3	Titanium Dioxide Rutile, Zinc Oxide, Polysulfide of Sodium-Alumino-Silicate, Copper Phthalocyanine	PW 6, PW4, PB 29, PB 15:3
Lamp Black	1	Nearly Pure Amorphous Carbon	PBk 6
Manganese Violet	4	Manganese Ammonium Pyrophosphate	PV 16
Mars Black	2	Synthetic Black Iron Oxide	PBk 11
Mars Orange	2	Synthetic Iron Oxide	PR 101, PY 42
Mars Red	2	Synthetic Iron Oxide	PR 101
Mars Red Light	2	Synthetic Iron Oxide	PR 101
Mars Violet	2	Synthetic Iron Oxide	PR 101
Mars Yellow Deep	2	Synthetic Iron Oxide, Synthetic Hydrated Iron Oxide	PR 101, PY 42
Mars Yellow Light	2	Synthetic Hydrated Iron Oxide	PY 42
Montserrat Orange	4	Titanium Dioxide Rutile, Zinc Oxide, Dipyrrolopyrrol, Diarylide, Quinacridone	PW 6, PW 4, PO 73, PY 83, PV 19
Naples Yellow	2	Zinc Oxide, Titanium Dioxide Rutile, Synthetic Hydrated Iron Oxide, Arylide Yellow 10G, Arylide Yellow RN, Polysulfide of Sodium-Alumino-Silicate	PW 4, PW 6, PY 42, PY 3, PY 65, PV 15
Naples Yellow Italian	2	Chrome Antimony Titanate	PBr 24
Naples Yellow Reddish	2	Titanium Dioxide Rutile, Zinc Oxide, Synthetic Hydrated Iron Oxide, Dipyrrolopyrrol	PW 6, PW 4, PY 42, PO 73
Nickel Yellow	4	Nickel Titanate	PY 53
Olive Green	3	Diarylide Yellow, Chlorinated Copper Phthalocyanine, Synthetic Red Iron Oxide, Synthetic Hydrated Iron Oxide	PY 83, PG 7, PR 101, PY 42
Payne's Grey	2	Polysulfide of Sodium Alumino-Silicate, Amorphous Carbon produced by charring animal bones	PB 29, PBk 9
Payne's Grey (Violet)	3	Natural Iron Oxide containing Manganese, Carbazole Dioxazine, Polysulfide of Sodium-Alumino-Silicate	PBr 7, PV 23, PB 29
Permanent Crimson	6	Anthraquinone	PR177
Permanent Green	3	Arylide Yellow 10G, Chlorinated Copper Phthalocyanine	PY 3, PG 7
Permanent Green Light	3	Arylide Yellow 10G, Chlorinated Copper Phthalocyanine	PY 3, PG 7
Permanent Lemon	3	Arylide Yellow 10G, Titanium Dioxide Rutile, Hydrous Chromium Sesquioxide	PY 3, PW 6, PG 18
Permanent Orange	3	Dipyrrolopyrrol, Diarylide	PO 73, PY 83
Permanent Red-Orange	3	Benzimidazolone Orange HL	PO 36
Permanent Yellow Deep	3	Arylide Yellow RN	PY 65
Permanent Yellow Light	3	Arylide Yellow 10G	PY 3
Permanent Yellow Medium	3	Arylide Yellow 5GX, Arylide Yellow RN	PY 74, PY 65
Persian Rose	4	Titanium Dioxide Rutile, Zinc Oxide, Dipyrrolopyrrol, Quinacridone	PW 6, PW 4, PO 73, PV 19
Perylene Crimson	6	Anthraquinone Perylene	PR 179
Phthalo Blue	4	Copper Phthalocyanine	PB 15:3
Phthalo Green	4	Chlorinated Copper Phthalocyanine	PG 7
Phthalo Green-Yellowish	4	Brominated & Chlorinated Copper Phthalocyanine	PG 36
Phthalo Turquoise	4	Copper Phthalocyanine, Chlorinated Copper Phthalocyanine	PB 15:3, PG 7
Provence Violet Bluish	4	Zinc Oxide, Titanium Dioxide Rutile, Carbazole Dioxazine	PW 4, PW 6, PV 23
Provence Violet Reddish	4	Zinc Oxide, Titanium Dioxide Rutile, Quinacridone	PW 4, PW 6, PV 19
Prussian Blue	2	Ferriammonium Ferrocyanide	PB 27
Quinacridone Gold Brown	5	Quinacridone, Diarylide Yellow	PR 206, PY 83
Quinacridone Magenta	5	Quinacridone	PR 122
Quinacridone Red	5	Quinacridone	PV 19
Quinacridone Violet	5	Quinacridone	PV 19
Raw Sienna	1	Natural Hydrated Iron Oxide	PY 43
Raw Umber	1	Natural Iron Oxide containing Manganese	PBr 7
Red Ochre	1	Synthetic Red Iron Oxide	PR 101
Red Umber	1	Calcined Natural Iron Oxide containing Manganese	PBr 7
Sap Green	4	Synthetic Hydrated Iron Oxide, Chlorinated Copper Phthalocyanine, Diarylide Yellow	PY 42, PG 7, PY 83
Sevres Blue	3	Titanium Dioxide Rutile, Zinc Oxide, Copper Phthalocyanine	PW 6, PW 4, PB 15:3
Silver White	4	Basic Lead Carbonate, Zinc Oxide	PW 1, PW 4
Slate Black	1	Powdered Slate	PBk 19
Spanish Earth	1	Synthetic Red Iron Oxide	PR 101
Stil De Grain	4	Synthetic Hydrated Iron Oxide	PY 42
Titanium - Zinc White	1	Titanium Dioxide Rutile, Zinc Oxide	PW 6, PW 4
Titanium White	1	Titanium Dioxide Rutile	PW 6
Turkey Umber	1	Calcined Natural Iron Oxide containing Manganese, Chlorinated Copper Phthalocyanine	PBr 7, PG 7
Turquoise	3	Zinc Oxide, Titanium White, Copper Phthalocyanine, Chlorinated Copper Phthalocyanine	PW 4, PW 6, PB 15:3, PG 7
Ultramarine Blue	2	Polysulfide of Sodium Alumino-Silicate	PB 29
Ultramarine Blue French	2	Polysulfide of Sodium Alumino-Silicate	PV 15
Ultramarine Pink	4	Polysulfide of Sodium Alumino-Silicate	PV 15
Ultramarine Violet	4	Polysulfide of Sodium Alumino-Silicate	PV 15
Unbleached Titanium	1	Titanium Dioxide Rutile	PW 6
Unbleached Titanium Pale	1	Titanium Dioxide Rutile	PW 6
Van Dyke Brown	1	Natural Brown 8, Natural Iron Oxide containing Manganese	NB 8, PBr7
Veronese Green	3	Titanium Dioxide Rutile, Arylide Yellow 10G, Chlorinated Copper Phthalocyanine	PW 6, PY 3, PG 7
Viridian	5	Hydrous Chromium Sesquioxide	PG 18
Yellow Ochre (Domestic)	1	Natural Hydrated Iron Oxide	PY 43
Yellow Ochre Burnt	1	Synthetic Hydrated Iron Oxide, Calcined Yellow Ochre, Natural Hydrated Iron Oxide	PY 42, PR 102, PY 43
Zinc Buff	1	Zinc Oxide, Titanium Dioxide Rutile, Synthetic Hydrated Iron Oxide, Synthetic Iron Oxide	PW 4, PW 6, PY 42, PR 101
Zinc Buff Yellowish	2	Zinc Oxide	PW 4
Zinc White	1	Zinc Oxide	PW 4